

Systematics in the formation of lanthanide halide compounds

Marcelle Gaune-Escard^{1*}, Leszek Rycerz², Ewa Ingier-Stocka², Slobodan Gadzuric³

- 1) *Ecole Polytechnique Universitaire de Marseille, CNRS UMR 6595, 5 Rue Enrico Fermi, 13453 Marseille Cedex 13, France*
- 2) *Chemical Metallurgy Group, Faculty of Chemistry, Wrocław University of Technology, Wybrzeże Wyspińskiego 27, 50-370 Wrocław, Poland*
- 3) *Faculty of Natural Science, Department of Chemistry, University of Novi Sad, Trg. Obradovica 3, 21000 Novi Sad, Serbia*

Abstract: The phase diagrams of trivalent lanthanide–alkali metal halide systems range from simple eutectic systems to systems with one (several) congruently or incongruently melting compounds.

Using both literature information and our extensive experimental results, the LnX_3 -MX binary mixtures phase diagrams were screened in terms of the $IP_{M^+}/IP_{\text{Ln}^{3+}}$ ratio ($IP_i = z_i/r_i$; z_i : ionic charge; r_i : ionic radius; Ln: lanthanide, X: halide and M: alkali metal).

A similar approach was conducted on the divalent LnX_2 -MX lanthanide-alkali halides phase diagrams ranging from simple eutectic to one or more congruently melting compounds.

Lanthanides being widely used as simulants of actinides, this classification can constitute a useful predictive tool for those still unexplored systems.

Keywords: Lanthanide, alkali metal, halide, mixture, phase diagram, topology, ionic potential, prediction

1. Introduction

The lanthanide trihalides have been the subject of investigations for many years. The physicochemical properties of the compounds they form, for instance with the alkali halides, can be examined and correlated in a way which is unique since the lanthanides regularly vary along the series they form in the periodic table. Lanthanide metal halides as also the systems they form with alkali metal halides were recently the subject of focused and renewed interest. While the lanthanide fluorides or chlorides and related systems have been investigated in the past in relation with different applications, mostly nuclear in the 1950s and 1960s, very little existed until recently on their bromide and iodide counterparts. These systems are of technological importance in several fields of which optical and scintillation devices, high-temperature energy-saving light sources (metal-halide lamps), etc., are just a few examples. They also characterize by several features making them challenging objects of fundamental interest.

Phase equilibrium in melts and also the topology of related binary phase diagrams strongly depend on the physicochemical properties of the ions in the mixture. The phase equilibria and hence the phase diagrams topology of binary mixtures are a function of the physico-chemical properties of components. There are many factors that influence these equilibria, but ionic charge (z_i) and radius (r_i) play the most important role [1]. The ratio of these two values gives the so-called ionic potential IP [2-3]

$$IP = z_i/r_i$$

In common anion systems, the cation with the higher ionic potential value may coordinate anions thus forming a complex ion. Conversely the other cation, that has a lower ionic potential, would not compete in the common anion coordination. Thus, the formation of compound(s) in binary molten salt systems depends on cation competition to coordinate the common anion. This competition can be expressed by the ratio of ionic potentials [5-6]. In the case of cations with the same charge, this ratio is that of ionic radii [8-9].

When screening a series of binary salt mixtures with one common component in terms of the cationic potential of the second component, one can observe a correlated change in the phase diagram topology (from solid solutions, through eutectic and incongruently melting/congruently melting compounds systems) [1, 9-10]. Gawel [10-12] investigated this correlation between the ionic potential ratio and topology of phase diagram on the example of $\text{MeCl}_n\text{-UCl}_4$ binary systems, evidencing that the IP_{M+n}/IP_{U4+} ratio for the multivalent and uranium cations is essential for a classification of phase diagrams, including the number of compounds formed, their existence range and (congruently or incongruently) melting mechanism. Depending on the values of ionic potentials ratio, they are simple eutectic systems, or systems with one or more congruently melting compounds.

From this perspective, using both literature information and our extensive experimental results, efforts were performed to characterize the $\text{LnX}_3\text{-MX}$ and $\text{LnX}_2\text{-MX}$ (trivalent and divalent) lanthanide–alkali halides binary mixtures phase diagrams in terms of the IP_{M+}/IP_{Ln3+} and IP_{M+}/IP_{Ln2+} ratio (Ln=lanthanide, X=halide and M = alkali metal).

2. Results and discussion

2.1 Lanthanide(III) halide systems

The whole information available on the $\text{LnX}_3\text{-MX}$ phase diagrams was used in analyzing the influence of cationic potentials ratio on the topology of phase diagrams. The ionic radii used in ionic potential calculation were taken from literature [13] while the phase diagrams results for chloride [14-32], bromides [7, 33-45] and iodide [43, 46-51] systems were exhaustively compiled from all existing sources, including our experimental investigations.

Indeed a clear correlation was evidenced between the ionic potentials ratio IP_{M+}/IP_{Ln3+} of the alkali and lanthanide cations, and the resulting phase diagram type for all $\text{LnCl}_3\text{-MCl}$, $\text{LnBr}_3\text{-MBr}$ and $\text{LnI}_3\text{-MI}$ binary systems.

The whole systems split into three groups:

- simple eutectic systems ($IP_{M+}/IP_{Ln3+} \geq 0.448$; 0.325 and 0.333 for chloride, bromide and iodide systems, respectively),
- systems including only incongruently melting compounds (ionic potential ratio within the range $0.416 \geq IP_{M+}/IP_{Ln3+} \geq 0.280$; $0.315 \geq IP_{M+}/IP_{Ln3+} \geq 0.284$ and $0.352 \geq IP_{M+}/IP_{Ln3+} \geq 0.306$ for chloride, bromide and iodide systems, respectively),
- systems including both incongruently and congruently melting compounds ($IP_{M+}/IP_{Ln3+} \leq 0.256$).

In this third group, *i.e.* in the systems including both congruently and incongruently melting compounds, one can find far-reaching similarities as well as differences between the chloride, iodide and bromide systems.

Table 1. Ionic potential ratio and type of phase diagram in the systems LnCl₃-MCl.

System	$IP_{M^+} / IP_{Ln^{3+}}$	System type	Reference
LaCl ₃ -LiCl	0.478	Eutectic	[14]
CeCl ₃ -LiCl	0.465	Eutectic	[15]
PrCl ₃ -LiCl	0.456	Eutectic	[16]
NdCl ₃ -LiCl	0.448	Eutectic	[17]
TbCl ₃ -LiCl	0.416	LiTb ₂ Cl ₇ (decomposition in solid state)	[18]
HoCl ₃ -LiCl	0.402	Li ₃ HoCl ₆ *	[19]
ErCl ₃ -LiCl	0.396	Li ₃ ErCl ₆ *	[20]
YbCl ₃ -LiCl	0.386	Li ₃ YbCl ₆ *	[21]
LaCl ₃ -NaCl	0.346	Na ₃ LaCl ₆ *	[22]
CeCl ₃ -NaCl	0.336	Na ₃ CeCl ₆ *	[23]
PrCl ₃ -NaCl	0.330	Na ₃ PrCl ₆ *	[24]
NdCl ₃ -NaCl	0.325	Na ₃ NdCl ₆ *	[25]
SmCl ₃ -NaCl	0.315	Na ₂ SmCl ₅ *, Na ₃ Sm ₅ Cl ₁₈	[26]
EuCl ₃ -NaCl	0.310	Na ₂ EuCl ₅ *, Na ₃ EuCl ₆ *, NaEuCl ₄ *	[27]
GdCl ₃ -NaCl	0.306	Na ₃ GdCl ₆ *, Na ₂ GdCl ₅ *, NaGdCl ₄	[28]
TbCl ₃ -NaCl	0.301	Na ₃ TbCl ₆ *, Na ₂ TbCl ₅ *, NaTbCl ₄ *, NaTb ₂ Cl ₇ *	[29]
YbCl ₃ -NaCl	0.280	Na ₃ YbCl ₆ , NaYbCl ₄ *	[21]
LaCl ₃ -KCl	0.256	K ₂ LaCl ₅	[22]
CeCl ₃ -KCl	0.249	K ₃ CeCl ₆ , K ₂ CeCl ₅ , K ₂ Ce ₅ Cl ₁₈ *	[23]
PrCl ₃ -KCl	0.244	K ₃ PrCl ₆ , K ₂ PrCl ₅ *	[24]
NdCl ₃ -KCl	0.240	K ₃ NdCl ₆ , K ₂ NdCl ₅ *, KNd ₂ Cl ₇ *	[25]
LaCl ₃ -RbCl	0.237	Rb ₃ LaCl ₆ , Rb ₂ LaCl ₅ *, RbLa ₂ Cl ₇ *	[22]
SmCl ₃ -KCl	0.231	K ₃ SmCl ₆ , K ₂ SmCl ₅ *, KSm ₂ Cl ₇	[26]
CeCl ₃ -RbCl	0.231	Rb ₃ CeCl ₆ , Rb ₂ CeCl ₅ *, RbCe ₂ Cl ₇ *	[23]
EuCl ₃ -KCl	0.229	K ₃ EuCl ₆ , K ₂ EuCl ₅ *, KEu ₂ Cl ₇	[27]
PrCl ₃ -RbCl	0.227	Rb ₃ PrCl ₆ , Rb ₂ PrCl ₅ *, RbPr ₂ Cl ₇ *	[24]
GdCl ₃ -KCl	0.226	K ₃ GdCl ₆ , K ₂ GdCl ₅ *, KGd ₂ Cl ₇	[28]
TbCl ₃ -KCl	0.222	K ₃ TbCl ₆ , K ₂ TbCl ₅ *, KTb ₂ Cl ₇	[30]
NdCl ₃ -RbCl	0.222	Rb ₃ NdCl ₆ , Rb ₂ NdCl ₅ *, RbNd ₂ Cl ₇ *	[25]
HoCl ₃ -KCl	0.216	K ₃ HoCl ₆ , K ₂ HoCl ₅ *, KHO ₂ Cl ₇	[31]
SmCl ₃ -RbCl	0.216	Rb ₃ SmCl ₆ , Rb ₂ SmCl ₅ *, RbSm ₂ Cl ₇	[26]
EuCl ₃ -RbCl	0.212	Rb ₃ EuCl ₆ , Rb ₂ EuCl ₅ *, RbEu ₂ Cl ₇	[27]
TmCl ₃ -KCl	0.209	K ₃ TmCl ₆ , K ₂ TmCl ₅ *, KTm ₂ Cl ₇ *	[32]
GdCl ₃ -RbCl	0.209	Rb ₃ GdCl ₆ , Rb ₂ GdCl ₅ *, RbGd ₂ Cl ₇	[28]
LaCl ₃ -CsCl	0.208	Cs ₃ LaCl ₆ , Cs ₂ LaCl ₅ *, CsLa ₂ Cl ₇ *	[22]
TbCl ₃ -RbCl	0.206	Rb ₃ TbCl ₆ , RbTb ₂ Cl ₇	[30]
CeCl ₃ -CsCl	0.202	Cs ₃ CeCl ₆ , Cs ₂ CeCl ₅ *, CsCe ₂ Cl ₇	[23]
HoCl ₃ -RbCl	0.200	Rb ₃ HoCl ₆ , Rb ₂ HoCl ₅ *, RbHo ₂ Cl ₇	[31]
PrCl ₃ -CsCl	0.198	Cs ₃ PrCl ₆ , Cs ₂ PrCl ₅ *, CsPr ₂ Cl ₇	[24]
NdCl ₃ -CsCl	0.195	Cs ₃ NdCl ₆ , Cs ₂ NdCl ₅ *, CsNd ₂ Cl ₇	[25]
TmCl ₃ -RbCl	0.194	Rb ₃ TmCl ₆ , Rb ₂ TmCl ₅ *, RbTm ₂ Cl ₇	[32]
SmCl ₃ -CsCl	0.189	Cs ₃ SmCl ₆ , Cs ₂ SmCl ₅ *, CsSm ₂ Cl ₇	[26]
EuCl ₃ -CsCl	0.186	Cs ₃ EuCl ₆ , Cs ₂ EuCl ₅ *, CsEu ₂ Cl ₇	[27]
GdCl ₃ -CsCl	0.183	Cs ₃ GdCl ₆ , Cs ₂ GdCl ₅ *, CsGd ₂ Cl ₇	[28]
TbCl ₃ -CsCl	0.181	Cs ₃ TbCl ₆ , Cs ₂ TbCl ₅ *, CsTb ₂ Cl ₇	[30]
HoCl ₃ -CsCl	0.175	Cs ₃ HoCl ₆ , Cs ₂ HoCl ₅ *, CsHo ₂ Cl ₇ , Cs ₃ Ho ₂ Cl ₉ *	[31]
TmCl ₃ -CsCl	0.170	Cs ₃ TmCl ₆ , Cs ₂ TmCl ₅ *, CsTm ₂ Cl ₇ , Cs ₃ Tm ₂ Cl ₉ *	[32]

* incongruent melting

The common features are as follows:

- in all systems - the identical value of the ionic potential ratio at which the congruently melting compounds occur ($IP_{M^+}/IP_{Ln^{3+}} = 0.256$),
- the first congruently melting compound that occurs at $IP_{M^+}/IP_{Ln^{3+}} = 0.256$ is K₂LnX₅ (X = Cl, Br, I),
- the congruently melting M₂LnX₅ compounds exist within a very narrow ionic potential ratio range ($0.256 \geq IP_{M^+}/IP_{Ln^{3+}} \geq 0.249$),
- at smaller ionic potential ratio ($IP_{M^+}/IP_{Ln^{3+}} < 0.249$), the M₂LnX₅ compounds melt incongruently,

- the congruently melting compounds M_3LnX_6 form at smaller $IP_{M^+}/IP_{Ln^{3+}}$ values (≤ 0.249).
- The common characteristics of chloride and bromide systems is also the occurrence of MLn_2X_7 compounds ($X = Cl, Br; M = K, Rb, Cs$) that melt congruently or incongruently, and form in the systems where $IP_{M^+}/IP_{Ln^{3+}} \leq 0.244$.

Table 2. Ionic potential ratio and type of phase diagram in the systems $LnBr_3$ -MBr

System	$IP_{M^+} / IP_{Ln^{3+}}$	System type	Reference
LaBr ₃ -LiBr	0.478	Eutectic	[33]
CeBr ₃ -LiBr	0.465	Eutectic	[34]
PrBr ₃ -LiBr	0.456	Eutectic	[35]
NdBr ₃ -LiBr	0.448	Eutectic	[36]
LaBr ₃ -NaBr	0.346	Eutectic	[37]
CeBr ₃ -NaBr	0.336	Eutectic	[34]
PrBr ₃ -NaBr	0.330	Eutectic	[37]
NdBr ₃ -NaBr	0.325	Eutectic	[37]
SmBr ₃ -NaBr	0.315	Na ₇ SmBr ₁₀ *	[37]
GdBr ₃ -NaBr	0.306	Na ₃ GdBr ₆ *	[37]
HoBr ₃ -NaBr	0.292	Na ₃ HoBr ₆ *	[38]
TmBr ₃ -NaBr	0.284	Na ₃ TmBr ₆ *	[39]
LaBr ₃ -KBr	0.256	K ₂ LaBr ₅	[40]
CeBr ₃ -KBr	0.249	K ₃ CeBr ₆ , K ₂ CeBr ₅ *	[41]
PrBr ₃ -KBr	0.244	K ₃ PrBr ₆ , K ₂ PrBr ₅ *, KPr ₂ Br ₇ *	[7]
NdBr ₃ -KBr	0.240	K ₃ NdBr ₆ , K ₂ NdBr ₅ *, KNd ₂ Br ₇	[7]
LaBr ₃ -RbBr	0.237	Rb ₃ LaBr ₆ , Rb ₂ LaBr ₅ *	[40]
SmBr ₃ -KBr	0.231	K ₃ SmBr ₆ , K ₂ SmBr ₅ *, KSm ₂ Br ₇	[7]
CeBr ₃ -RbBr	0.231	Rb ₃ CeBr ₆ , Rb ₂ CeBr ₅ *, RbCe ₂ Br ₇ *	[42]
PrBr ₃ -RbBr	0.227	Rb ₃ PrBr ₆ , Rb ₂ PrBr ₅ *, RbPr ₂ Br ₇ *	[7]
GdBr ₃ -KBr	0.226	K ₃ GdBr ₆ , K ₂ GdBr ₅ *, KGd ₂ Br ₇	[7]
TbBr ₃ -KBr	0.222	K ₃ TbBr ₆ , K ₂ TbBr ₅ *, KTb ₂ Br ₇ *	[43]
NdBr ₃ -RbBr	0.222	Rb ₃ NdBr ₆ , Rb ₂ NdBr ₅ *, RbNd ₂ Br ₇	[7]
DyBr ₃ -KBr	0.219	K ₃ DyBr ₆ , K ₂ DyBr ₅ *	[7]
SmBr ₃ -RbBr	0.216	Rb ₃ SmBr ₆ , Rb ₂ SmBr ₅ *, RbSm ₂ Br ₇	[7]
ErBr ₃ -KBr	0.212	K ₃ ErBr ₆ , K ₂ ErBr ₅ *	[7]
GdBr ₃ -RbBr	0.209	Rb ₃ GdBr ₆ , Rb ₂ GdBr ₅ *, RbGd ₂ Br ₇	[7]
LaBr ₃ -CsBr	0.208	Cs ₃ LaBr ₆ , Cs ₂ LaBr ₅ *, CsLa ₂ Br ₇ *	[40]
YbBr ₃ -KBr	0.207	K ₃ YbBr ₆ , K ₂ YbBr ₅ *	[7]
TbBr ₃ -RbBr	0.206	Rb ₃ TbBr ₆ , RbTb ₂ Br ₇ *	[43]
DyBr ₃ -RbBr	0.203	Rb ₃ DyBr ₆ , Rb ₂ DyBr ₅ *, RbDy ₂ Br ₇ *	[7]
CeBr ₃ -CsBr	0.202	Cs ₃ CeBr ₆ , Cs ₂ CeBr ₅ *, CsCe ₂ Br ₇	[44]
PrBr ₃ -CsBr	0.198	Cs ₃ PrBr ₆ , CsPr ₂ Br ₇	[37]
ErBr ₃ -RbBr	0.197	Rb ₃ ErBr ₆ , Rb ₂ ErBr ₅ *	[7]
NdBr ₃ -CsBr	0.195	Cs ₃ NdBr ₆ , CsNd ₂ Br ₇	[37]
YbBr ₃ -RbBr	0.192	Rb ₃ YbBr ₆ , Rb ₂ YbBr ₅ *	[7]
SmBr ₃ -CsBr	0.189	Cs ₃ SmBr ₆ , Cs ₂ SmBr ₅ *, CsSm ₂ Br ₇	[7]
GdBr ₃ -CsBr	0.183	Cs ₃ GdBr ₆ , Cs ₂ GdBr ₅ *, CsGd ₂ Br ₇	[7]
TbBr ₃ -CsBr	0.181	Cs ₃ TbBr ₆ , CsTb ₂ Br ₇ *	[43]
DyBr ₃ -CsBr	0.178	Cs ₃ DyBr ₆ , CsDy ₂ Cl ₇ *, Cs ₃ Dy ₂ Br ₉ *	[45]
HoBr ₃ -CsBr	0.175	Cs ₃ HoBr ₆ , CsHo ₂ Br ₇ *	[38]
ErBr ₃ -CsBr	0.173	Cs ₃ ErBr ₆ , Cs ₂ ErCl ₅ *	[7]
YbBr ₃ -CsBr	0.168	Cs ₃ YbBr ₆ , Cs ₂ YbBr ₅ *	[7]

However, some differences can be noted between the chloride, bromide and iodide systems within this classification:

- M_2LnI_5 compounds occur within a narrow range of ionic potential ratio values (0.256–0.222), while the M_2LnCl_5 and M_2LnBr_5 occur in all chloride and bromide systems with ratio $IP_{M^+}/IP_{Ln^{3+}} \leq 0.256$,
- MLn_2X_7 compounds, present in chloride and bromide systems at $IP_{M^+}/IP_{Ln^{3+}} \leq 0.244$, practically do not occur in iodide systems (with the exception of RbNd₂I₇),
- $M_3Ln_2X_9$ compounds that exist in chloride ($IP_{M^+}/IP_{Ln^{3+}} \leq 0.175$) and iodide ($IP_{M^+}/IP_{Ln^{3+}} \leq 0.198$, systems practically do not occur in bromide systems (excepted for Cs₃Dy₂Br₉).

Table 3. Ionic potential ratio and type of phase diagram in the systems $\text{LnI}_3\text{-MI}$

System	$IP_{M^{+}} / IP_{\text{Ln}^{3+}}$	System type	Reference
$\text{LaI}_3\text{-LiI}$	0.478	Eutectic	[46]
$\text{NdI}_3\text{-LiI}$	0.465	Eutectic	[46]
$\text{LaI}_3\text{-NaI}$	0.346	Eutectic	[47]
$\text{PrI}_3\text{-NaI}$	0.330	Eutectic	[47]
$\text{NdI}_3\text{-NaI}$	0.325	$\text{Na}_7\text{NdI}_{10}$ *	[47]
$\text{SmI}_3\text{-NaI}$	0.315	Na_3SmI_6 *	[47]
$\text{GdI}_3\text{-NaI}$	0.306	Na_3GdI_6 *	[47]
$\text{LaI}_3\text{-KI}$	0.256	K_2LaI_5	[47]
$\text{PrI}_3\text{-KI}$	0.244	$\text{K}_3\text{PrI}_6, \text{K}_2\text{PrI}_5$ *	[47]
$\text{NdI}_3\text{-KI}$	0.240	$\text{K}_3\text{NdI}_6, \text{K}_2\text{NdI}_5$ *	[47]
$\text{LaI}_3\text{-RbI}$	0.237	$\text{Rb}_3\text{LaI}_6, \text{Rb}_2\text{LaI}_5$ *	[43]
$\text{SmI}_3\text{-KI}$	0.231	K_3SmI_6	[47]
$\text{GdI}_3\text{-KI}$	0.226	K_3GdI_6	[47]
$\text{NdI}_3\text{-RbI}$	0.222	$\text{Rb}_3\text{NdI}_6, \text{Rb}_2\text{NdI}_5$ *, RbNd_2I_7 *	[43]
$\text{DyI}_3\text{-KI}$	0.219	K_3DyI_6	[47]
$\text{ErI}_3\text{-KI}$	0.212	K_3ErI_6	[47]
$\text{LaI}_3\text{-CsI}$	0.208	$\text{Cs}_3\text{LaI}_6, \text{CsLa}_9\text{I}_{28}$ *	[47]
$\text{PrI}_3\text{-CsI}$	0.198	$\text{Cs}_3\text{PrI}_6, \text{Cs}_3\text{Pr}_2\text{I}_9$ *, $\text{CsPr}_9\text{I}_{28}$ *	[47]
$\text{NdI}_3\text{-CsI}$	0.195	$\text{Cs}_3\text{NdI}_6, \text{Cs}_3\text{Nd}_2\text{I}_9$ *, $\text{CsNd}_4\text{I}_{13}$ *	[47]
$\text{SmI}_3\text{-CsI}$	0.189	$\text{Cs}_3\text{SmI}_6, \text{Cs}_3\text{Sm}_2\text{I}_9$ *	[47]
$\text{GdI}_3\text{-CsI}$	0.183	$\text{Cs}_3\text{GdI}_6, \text{Cs}_3\text{Gd}_2\text{I}_9$	[47]
$\text{TbI}_3\text{-CsI}$	0.181	$\text{Cs}_3\text{TbI}_6, \text{Cs}_3\text{Tb}_2\text{I}_9$	[48]
$\text{DyI}_3\text{-CsI}$	0.178	$\text{Cs}_3\text{DyI}_6, \text{Cs}_3\text{Dy}_2\text{I}_9$	[49]
$\text{HoI}_3\text{-CsI}$	0.175	$\text{Cs}_3\text{HoI}_6, \text{Cs}_3\text{Ho}_2\text{I}_9$	[50-51]
$\text{ErI}_3\text{-CsI}$	0.173	$\text{Cs}_3\text{ErI}_6, \text{Cs}_3\text{Er}_2\text{I}_9$	[47]
$\text{TmI}_3\text{-CsI}$	0.170	$\text{Cs}_3\text{TmI}_6, \text{Cs}_3\text{Tm}_2\text{I}_9$	[48]

* incongruent melting

This classification was tested on the $\text{CeBr}_3\text{-MBr}$ binary systems ($M=\text{Li, Na, K, Rb, Cs}$), still unknown at the time it was established. Further experimental investigations validated that $\text{CeBr}_3\text{-LiBr}$ and $\text{CeBr}_3\text{-NaBr}$ are simple eutectic systems [34] ($IP_{M^{+}}/IP_{\text{Ce}^{3+}}=0.465$ and 0.366 , respectively), while two congruently melting compounds, namely K_3CeBr_6 and K_2CeBr_5 exist in the $\text{CeBr}_3\text{-KBr}$ system [41] as expected from the corresponding ionic potential ratio ($IP_{\text{K}^{+}}/IP_{\text{Ce}^{3+}} = 0.249$). The $\text{CeBr}_3\text{-RbBr}$ [42] and $\text{CeBr}_3\text{-CsBr}$ [44] systems ($IP_{\text{Rb}^{+}}/IP_{\text{Ce}^{3+}} = 0.231$ and $IP_{\text{Cs}^{+}}/IP_{\text{Ce}^{3+}} = 0.202$, respectively) follow the predicted pattern. The former system is characterized by the existence of three compounds, namely Rb_3CeBr_6 , Rb_2CeBr_5 and RbCe_2Br_7 . Rb_3CeBr_6 melts congruently whereas Rb_2CeBr_5 and RbCe_2Br_7 melt incongruently. The $\text{CeBr}_3\text{-CsBr}$ system includes three compounds: the congruently melting Cs_3CeBr_6 and CsCe_2Br_7 together with Cs_2CeBr_5 , which decomposes in the solid state.

Other tests were performed more recently on the PrBr_3 -based bromide systems that also follow this trend. The binary systems with LiBr and NaBr are of simple eutectic-type [35] ($IP_{M^{+}}/IP_{\text{Pr}^{3+}} = 0.456$ and 0.330 , respectively) (Figs.1-2). In the system with KBr [52], the congruently melting compound, K_3PrBr_6 and two incongruently melting compounds (K_2PrBr_5 and KPr_2Br_7) were found ($IP_{\text{K}^{+}}/IP_{\text{Pr}^{3+}} = 0.244$) (Fig.3). The system with rubidium bromide ($IP_{\text{Rb}^{+}}/IP_{\text{Pr}^{3+}} = 0.227$) [53] was also characterized by two congruently (Rb_3PrBr_6 and RbPr_2Br_7) and one incongruently melting (Rb_2PrBr_5) compounds (Fig.4).

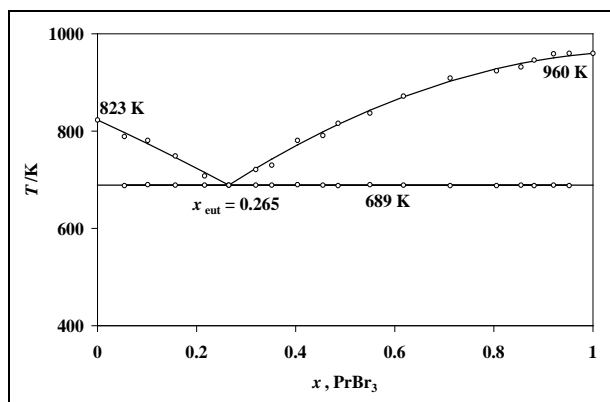


Figure 1. Phase diagram of the PrBr_3 - LiBr binary system.

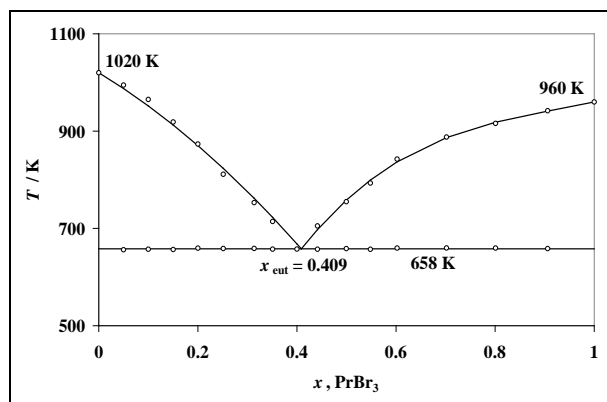


Figure 2. Phase diagram of the PrBr_3 - NaBr binary system

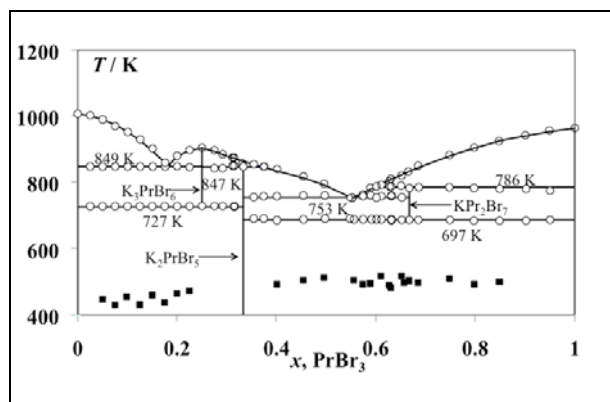


Figure 3. Phase diagram of the PrBr_3 - KBr binary system

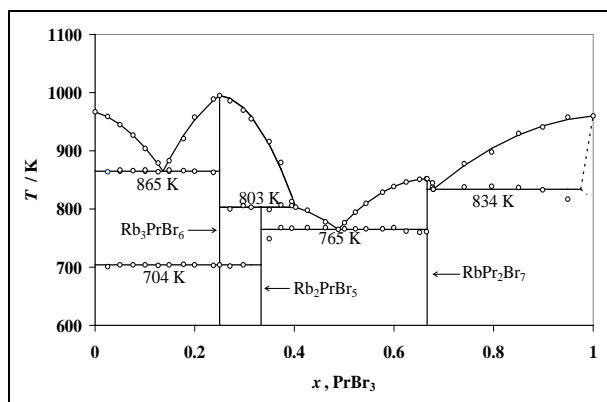


Figure 4. Phase diagram of the PrBr_3 - RbBr binary system

Ongoing thermodynamic investigations on the DyBr_3 - MBr systems validated both early experimental results and the reliability of the ionic potential predictive tool for phase diagram topology.

2.2 Lanthanide(II) halide systems

For the lanthanide(II) halide systems, information was less but is building up through the experimental research being carried out.

Phase equilibrium data are rather scarce for the systems with divalent lanthanide halides and, most of the time, not confirmed by structural measurements. However, a number of ternary alkali-metal/rare-earth metal iodide compounds were reported in a detailed review article [53].

In Tables 4-5 we gathered the whole information on 60 binary lanthanide(II) halide systems (fluoride melts were not considered in this work).

The overall information is being complemented through investigations carried out by several research groups, including ours, some of it not published yet.

We applied to all divalent systems the same approach of correlating the main features in the corresponding phase diagrams, highlighting how this ionic potential criterion could make it possible to predict *a priori* the general features of still unexplored systems. Special attention has been paid to the intermediate compounds formed in these LnX₂-MX binary mixtures because they have specific properties suitable for a number of technological applications (halide lamps, digital radiography,...).

Table 4. Ionic potential ratio and type of phase diagram in the systems LnX₂-MX (X= Cl, Br)

IP _{M+} / IP _{Ln2+(Sr+2)}	System	System type	Ref.	System	System type	Ref.
0.953	SmCl ₂ -LiCl	---	----	SmBr ₂ -LiBr	---	----
0.946	SrCl ₂ -LiCl	Eutectic	[57]	SrBr ₂ -LiBr	LiSr ₂ Br ₅	[59-67]
0.939	EuCl ₂ -LiCl	Eutectic	[54]	EuBr ₂ -LiBr	LiEu ₂ Br ₅	[68]
0.865	YbCl ₂ -LiCl	---	----	YbBr ₂ -LiBr	---	----
0.691	SmCl ₂ -NaCl	---	----	SmBr ₂ -NaBr	---	----
0.686	SrCl ₂ -NaCl	Eutectic	[60]	SrBr ₂ -NaBr	Eutectic	[59]
0.681	EuCl ₂ -NaCl	Eutectic	[61], [62]	EuBr ₂ -NaBr	Eutectic	[56]
0.627	YbCl ₂ -NaCl	---	----	YbBr ₂ -NaBr	---	----
0.511	SmCl ₂ -KCl	---	----	SmBr ₂ -KBr	---	----
0.507	SrCl ₂ -KCl	K ₂ SrCl ₄ , K ₂ Sr ₂ Cl ₅	[59-63]	SrBr ₂ -KBr	K ₂ SrBr ₄ , KSrBr ₃ , KSr ₂ Br ₅	[65]
0.504	EuCl ₂ -KCl	K ₂ EuCl ₄ , KEu ₂ Cl ₅	[64]	EuBr ₂ -KBr	K ₂ EuBr ₄ , KEuBr ₃ , KEu ₂ Br ₅	[69]
0.464	YbCl ₂ -KCl	---	----	YbBr ₂ -KBr	---	----
0.473	SmCl ₂ -RbCl	---	----	SmBr ₂ -RbBr	---	----
0.470	SrCl ₂ -RbCl	RbSrCl ₃ , RbSr ₂ I ₅	[65]	SrBr ₂ -RbBr	Rb ₂ SrBr ₄ , RbSrBr ₃ , RbSr ₂ Br ₅	[70]
0.466	EuCl ₂ -RbCl	RbEuCl ₃ , RbEu ₂ Cl ₅	[64]	EuBr ₂ -RbBr	Rb ₂ EuBr ₄ , RbEuBr ₃ , RbEu ₂ Br ₅	[71]
0.430	YbCl ₂ -RbCl	---	----	YbBr ₂ -RbBr	---	----
0.415	SmCl ₂ -CsCl	---	----	SmBr ₂ -CsBr	---	----
0.412	SrCl ₂ -CsCl	CsSrCl ₃	[66]	SrBr ₂ -CsBr	CsSrBr ₃	[72]
0.408	EuCl ₂ -CsCl	CsEuCl ₃	[64]	EuBr ₂ -CsBr	CsEuBr ₃	[73]
0.376	YbCl ₂ -CsCl	---	----	YbBr ₂ -CsBr	---	----

* incongruent melting

As reported in literature, mostly Sm, Eu and Yb can form stable divalent halides.

The systems in Tables 4-5 were analyzed in terms of the IP_{M+}/IP_{Ln2+} ionic potential ratio.

It is clear that in some systems with IP_{M+}/IP_{Ln2+} > 0.850 we can find either a eutectic or a compound corresponding to the stoichiometry LiLn₂X₅. In the 0.627 < IP_{M+}/IP_{Ln2+} < 0.691 range, only eutectic mixtures are present (NaX-LnX₂). It is possible to expect that systems in the 0.627 < IP_{M+}/IP_{Ln2+} < 0.691 range, where experimental measurements were not performed yet, would be of the simple eutectic type (SmCl₂-NaCl or SmBr₂-NaBr).

All the phase diagrams characterized so far, except those with NaX, are not of this simple eutectic type. In the case of the systems formed by the LnX₂'s with KX and RbX, (0.430 < IP_{M+}/IP_{Ln2+} < 0.511 range), the phase diagrams are more complex and they include several either congruently or incongruently melting stoichiometric compounds. The analogous CsCl and CsBr systems are simpler than we expected, only one congruently melting compound (CsLnX₃) was found. This is not the case for SmI₂-CsI and YbI₂-CsI systems, where several congruently and incongruently stoichiometric compounds were reported [53-54].

All literature information together with our recent experimental data on the $\text{EuBr}_2\text{-MBr}$ binary mixtures [55-57] is presented in Table 4 for comparison with the $\text{SrX}_2\text{-MX}$ systems.

Strontium was selected for the purpose of comparison since its ionic radius is very similar to that of the Eu^{2+} ion with $\text{SrBr}_2/\text{EuBr}_2$ being isostructural.

Table 4 evidences identical features in all those $\text{EuX}_2\text{-MX}$ and $\text{SrX}_2\text{-MX}$ that had been characterized so far. An analogous compound was observed in all LiX systems; no compound in the NaX mixtures and compounds of the same stoichiometry were found in the KX- , RbX- and CsX- based binaries.

It should be stressed that while no compound had been reported in all Li- based lanthanide(III) halide systems, and the LiLn_2Br_5 compound is present in the Ln(II)-LiX systems ($\text{Ln(II)= Eu, Yb ; X= Br, I}$) as also LiSr_2Br_5 in the $\text{SrBr}_2\text{-LiBr}$ system.

The reason might be related to the fact that all these systems correspond to a high and identical ionic potential ratio ($\text{IP}_{\text{Li}^+}/\text{IP}_{\text{Eu}^{2+}(\text{Sr}^{2+})} \approx 1$). This indicates that the contribution of ionic potentials, both of lithium and europium(II) or strontium, is almost identical and both cations are attracted by the common anion in the same way. In other words, both the alkali and divalent cations contribute equally to compound formation.

Table 5. Ionic potential ratio and type of phase diagram in the systems $\text{LnI}_2\text{-MI}$

$\text{IP}_{\text{M}^+}/\text{IP}_{\text{Ln}^{2+}(\text{Sr}^{2+})}$	System	System type	Ref.
0.953	$\text{SmI}_2\text{-LiI}$	---	----
0.946	$\text{SrI}_2\text{-LiI}$	---	----
0.939	$\text{EuI}_2\text{-LiI}$	---	----
0.865	$\text{YbI}_2\text{-LiI}$	$\text{Li}_3\text{YbI}_5, \text{LiYb}_2\text{I}_5$	[54]
0.691	$\text{SmI}_2\text{-NaI}$	Eutectic	[79]
0.686	$\text{SrI}_2\text{-NaI}$	---	----
0.681	$\text{EuI}_2\text{-NaI}$	Eutectic	[54]
0.627	$\text{YbI}_2\text{-NaI}$	$\text{NaYb}_2\text{I}_5^*$	[74]
0.511	$\text{SmI}_2\text{-KI}$	$\text{KSm}_2\text{I}_5, \text{K}_2\text{SmI}_4^*$	[54], [79]
0.507	$\text{SrI}_2\text{-KI}$	---	----
0.504	$\text{EuI}_2\text{-KI}$	$\text{KEu}_2\text{I}_5, \text{K}_4\text{EuI}_6$	[54]
0.464	$\text{YbI}_2\text{-KI}$	KYbI_3	[74], [78]
0.473	$\text{SmI}_2\text{-RbI}$	$\text{Rb}_2\text{SmI}_4, \text{RbSm}_2\text{I}_5, \text{Rb}_4\text{SmI}_6$	[54,71]
0.470	$\text{SrI}_2\text{-RbI}$	---	----
0.466	$\text{EuI}_2\text{-RbI}$	$\text{RbEu}_2\text{I}_5, \text{RbEuI}_3, \text{Rb}_3\text{EuI}_5^*, \text{Rb}_4\text{EuI}_6^*$	[77-79]
0.430	$\text{YbI}_2\text{-RbI}$	$\text{RbYbI}_3, \text{Rb}_4\text{YbI}_6^*, \text{Rb}_4\text{YbI}_6$	[71], [80]
0.415	$\text{SmI}_2\text{-CsI}$	$\text{Cs}_2\text{SmI}_4^*, \text{CsSmI}_3, \text{Cs}_3\text{SmI}_5^*, \text{CsSm}_2\text{I}_5^*, \text{Cs}_4\text{SmI}_6$	[79-82]
0.412	$\text{SrI}_2\text{-CsI}$	---	----
0.408	$\text{EuI}_2\text{-CsI}$	$\text{CsEuI}_3, \text{Cs}_4\text{EuI}_6$	[54,77, 80-82]
0.376	$\text{YbI}_2\text{-CsI}$	$\text{CsYbI}_3, \text{Cs}_2\text{YbI}_4^*, \text{Cs}_6\text{YbI}_8, \text{Cs}_4\text{YbI}_6$	[80-83]

* incongruent melting

3. Conclusion

The whole information available on the $\text{LnX}_3\text{-MX}$ phase diagrams was used in analyzing the influence of cationic potentials ratio on the topology of phase diagrams. Indeed we found that the topology of $\text{LnX}_3\text{-MX}$ binary phase diagrams depends on the cationic potentials ratio. The trend to compound formation increases if $\text{IP}_{\text{M}^+}/\text{IP}_{\text{Ln}}$ decreases, resulting in

more and more complex phase diagrams. This tendency is related to the stronger interactions between lanthanide and halide ions, compared to those between alkali and halide ions. These lanthanide-halide interactions increase with the atomic number of lanthanide. It was also found that this trend increases in the sequence from LiX to CsX in the binary LnX_3 -MX systems. This approach constitutes a valuable tool for the prediction of the still unexplored lanthanide-alkali metal halide phase diagrams.

In addition, lanthanides being widely used as simulants of actinides (Ac), this classification would be of major interest for those AcX_3 -MX systems that cannot be investigated experimentally. It is well-accepted indeed that the chemistry of uranium(III), plutonium(III) and a trivalent transplutonium element directly under each lanthanide element in the periodic classification is similar to that of the lanthanide element in its trivalent state. This correlation holds especially well for those elements that occur later in the series. For example, the chemistry of americium(III) is similar to that of europium(III). Hence the interest of the same ionic potential-based approach for the AcX_3 -MX systems.

One may conclude that in the case of the Ln(II)-based binary systems, ion size and possibly common halide features have also influence on compound formation, as suggested by the more complex phase equilibria from the chloride to iodide series. It is clear from Table 4-5 that the IP parameter only is not sufficient for a more detailed classification of the LnX_2 -MX binary systems. However, it is difficult to go beyond this general observation since, as already stressed, experimental data are scanty and in addition may be questionable. For lanthanide(II) iodides, which are extremely reactive compounds, chemical synthesis is crucial and it was impossible to check for it in the corresponding papers [77-78, 82, 83-87].

Because of the lesser data available on the divalent lanthanide series, compared to those in the Ln(III)-based systems, only general trends could be observed for the former. This highlights the need of further experimental determinations for the still unexplored systems. This would make possible the validation of this ionic potential approach for the Ln(II)-based systems and its capability for predicting phase topology in those systems that cannot be investigated experimentally.

The investigation of LnX_n -MX system opened a fascinating route from multitechnique data acquisition to data prediction [88] and coupling the present approach will make it still more stimulating.

Acknowledgements

Financial support by the Polish Ministry of Science and Higher Education from budget on science in 2007-2010 under the grant N N204 4098 33 is gratefully acknowledged.

L.R., E.I-S and S.G. wish to thank the Ecole Polytechnique de Marseille for hospitality and support during this work.

References

- [1] A. Wojakowska, *Equilibrium phase diagrams and electrical conductivity in tin dihalides systems (in Polish)*, Ed. 62/1993 Medical University, Wroclaw 1993.
- [2] G. H. Cartledge: Studies on the periodic system. I. The ionic potential as a periodic function, *J. Am. Chem. Soc.*, 50, (1928), 2855.
- [3] G. H. Cartledge: Studies on the periodic system. II. The ionic potential and related properties, *J. Am. Chem. Soc.*, 50, (1928), 2863.

- [4] G. H. Cartledge: Studies on the periodic system. III. The relation between ionizing potentials and ionic potentials, *J. Am. Chem. Soc.*, 52, (1930), 3076.
- [5] V. R. Klokman: Types of melt diagrams of binary systems formed by radium chlorides and alkali metals, *Radiokhimiya*, 3, (1961), 302.
- [6] D. V. Drobot, B.G. Korshunov, G.P. Bordulenko, *Zh. Neorg. Khim.*, 13, (1968), 1635.
- [7] R. Blachnik, A. Jaeger-Kasper: Zustandsdiagramme von Alkalibromid-Lanthanoid(III)-bromid-Mischungen, *Z. Anorg. Allg. Chem.*, 461, (1980), 74.
- [8] R. E. Thoma: Cation size effects in complex fluoride compound formation, *Inorg. Chem.*, 1, (1962), 220-226.
- [9] E. Görlich: Crystallochemical systematization of condensed systems of two ionic compounds with a common anion, *Bull. Acad. Pol. Sci. Ser. Sci. Chim.*, 888, (1960), 231-238.
- [10] W. Gawel: Ionic potentials of cations and types of phase equilibria in metal chloride-uranium(IV) chloride systems, *Roczniki Chem.*, 49, (1975), 699-704.
- [11] W. Gawel, J. Josiak: Phase and cryometric studies of the system tin(II) chloride-uranium(IV) chloride, *Bull. Pol. Acad. Chem.*, 42, (1994), 211-220.
- [12] W. Gawel: Regularities of phase equilibria in the binary uranium tetrachloride systems and their thermodynamic interpretation, *J. Nucl. Materials*, 247, (1997), 301-303.
- [13] A. G. Sharpe, *Inorganic Chemistry*, Longman, New York 1986.
- [14] Q. Zhiyu, W. Mingsheng, Z. Chaoqui, D. Shuzhen, *J. Univ. Sci. Technol. Beijing*, 11, (1989), 601.
- [15] L. Chai, C. Zheng, *Zhongguo Xitu Xuebao*, 8, (1990), 93.
- [16] I. Kim, Y. Okamoto, T. Ogawa, *Proc. Seventh China-Japan Bilateral Conference on Molten Salt Chemistry and Technology, Xian, China, October 26-30, 1998*.
- [17] K. Igarashi, M. Kosaka, Y. Iwadate, *Denki Kagaku*, 58, (1990), 469.
- [18] Z. Chaogui, Z. Zhongdong, W. Siqiang, *Transactions NF Soc.*, 3, (93), 33.
- [19] Z. Chaogui, H. Shoulin, W. Siqiang, *Acta Chimica Sinica*, 52, (1994), 736.
- [20] Z. Chaogui, H. Shoulin, W. Siqiang, *Chemical Journal of Chinese Universities*, 14, (1993), 993.
- [21] Z. Chaogui, H. Shoulin, W. Siqiang, *Acta Physico-Chimica Sinica*, 10, (1994), 342.
- [22] H. J. Seifert, H. Fink, G. Thiel: Thermodynamic properties of double chlorides in the systems $ACl/LaCl_3$ ($A \equiv Na, K, Rb, Cs$), *J. Less-Common Metals*, 110, (1985), 139.
- [23] H. J. Seifert, J. Sandrock, G. Thiel: Thermochemical studies on the systems $ACl/CeCl_3$ ($A = Na-Cs$), *J. Thermal Anal.*, 31, (1986), 1309-1318.
- [24] H. J. Seifert, J. Sandrock, J. Uebach, *Z. Anorg. Allg. Chem.*, 555, (1987), 143.
- [25] H. J. Seifert, H. Fink, J. Uebach, Properties of double chlorides in the systems $ACl/NdCl_3$ ($A = Na-Cs$) *J. Thermal Anal.*, 33, (1988), 625-632.
- [26] G. Thiel, H. J. Seifert: Properties of double chlorides in the systems $ACl/SmCl_3$ ($A = Na-Cs$) *Thermochim. Acta*, 133, (1988), 275-282.
- [27] H. J. Seifert, J. Sandrock, *Z. Anorg. Allg. Chem.*, 587, (1990), 110.
- [28] H. J. Seifert, J. Sandrock, G. Thiel, *Z. Anorg. Allg. Chem.*, 598/599, (1991), 307.
- [29] H. J. Seifert, J. Sandrock, J. Uebach, *Acta Chim. Scand.*, 49, (1995), 653.
- [30] S. Mitra, J. Uebach, H.J. Seifert: Ternary Chlorides in the Systems $ACl/TbCl_3$ ($A = K, Rb, Cs$) *J. Solid State Chem.*, 115, (1995), 484-489.
- [31] M. Roffe, H. J. Seifert: Ternary chlorides in the systems $ACl/HoCl_3$ ($A = Cs, Rb, K$) *J. Alloys Comp.*, (1997), 257, 128.

- [32] Ch. Zheng, H.J. Seifert: Ternary Chlorides in the Systems $ACl/TmCl_3$ ($A=Cs, Rb, K$), *J. Solid State Chem.*, 135, (1998), 127-131.
- [33] L. Rycerz, E. Ingier-Stocka, B. Ziółek, S. Gadzuric, M. Gaune-Escard; Thermal studies of $LaBr_3$ and $LaBr_3$ -LiBr binary system, in (*Proc. International Symposium on Ionic Liquids in Honour of Marcelle Gaune-Escard, Carry le Rouet, France, June 26-28, 2003*) (2003), 83.
- [34] E. Ingier-Stocka, L. Rycerz, S. Gadzuric and M. Gaune-Escard: Thermal and conductometric studies of the $CeBr_3$ -MBr binary systems ($M = Li, Na$), *J. Alloys Comp.*, 450, (2008), 162-166.
- [35] E. Ingier-Stocka, L. Rycerz, M. Berkani, M. Gaune-Escard: Thermodynamic and transport properties of the $PrBr_3$ -MBr binary systems ($M = Li, Na$), *J. Molecular Liquids*, 148, (2009), 40-44.
- [36] L. Rycerz, E. Ingier-Stocka, M. Cieślak-Golonka: Thermal and conductometric studies of $NdBr_3$ and $NdBr_3$ -LiBr binary system, *J. Therm. Anal. Cal.*, 72, (2003), 241-251.
- [37] G. Vogel, *Z. Anorg. Allg. Chem.*, 388, (1972), 43.
- [38] A. G. Dudareva, O.W. Polanskaja, N. W. Tenanko, A. I. Ezhov, A. B. Strekachinskij, *Zh. Neorg. Khim.*, 29, (1984), 2646.
- [39] A. K. Molodkin, A. B. Strekachinskii, A. G. Dudareva, A. I. Ezhov, A. G. Krokhina, *Zh. Neorg. Khim.*, 27, (1982), 219.
- [40] H. J. Seifert, Y. Yuan, *J. Less-Common Metals*, 170, (1991), 135.
- [41] L. Rycerz, E. Ingier-Stocka, S. Gadzuric, M. Gaune-Escard: Phase Diagram and Electrical Conductivity of $CeBr_3$ -KBr, *Z. Naturforsch.*, 62a, (2007), 197-204.
- [42] L. Rycerz, E. Ingier-Stocka, S. Gadzuric and M. Gaune-Escard: Phase diagram and electrical conductivity of the $CeBr_3$ -RbBr binary system, *J. Alloys Comp.*, 1450, (2008), 175-180.
- [43] Rycerz, L. *Thermochemistry of lanthanide halides and compounds formed in lanthanide halide-alkali metal halide systems (in Polish)*; Scientific Papers of Institute of Inorganic Chemistry and Metallurgy of Rare Elements, Series Monographs 35; Wroclaw University of Technology: Wroclaw, 2004.
- [44] L. Rycerz, E. Ingier-Stocka, M. Gaune-Escard: Phase diagram and electrical conductivity of the $CeBr_3$ -CsBr binary system, *J. Therm. Anal. Calorim.*, 97, (2009), 1015-1021.
- [45] B. Gather, R. Blachnik, *Experientia, Suppl.* 37, (1979), 81.
- [46] L. Rycerz, M. Gaune-Escard, unpublished results.
- [47] J. Kutscher, A. Schneider: Chemie der Seltenen Erden in geschmolzenen Alkalihalogeniden. VIII. Untersuchung der Zustandsdiagramme von Lanthaniden(III)-jodiden im Gemisch mit Alkalijodiden, *Z. Anorg. Allgem. Chem.*, 386, (1971), 38.
- [48] A. G. Dudarieva, S. B. Nechitaïlov, A. T. Babuszkina, K. Yu. Volgin, A. A. Boguslavskii, *Zh. Neorg. Khim.*, 34, (1989), 3164.
- [49] A. K. Molodkin, A. G. Dudarieva, *Zh. Neorg. Khim.*, 31, (1986), 2784.
- [50] A. G. Korzina, A. P. Andrachnikova, A. B. Strekachinskii, V. A. Krochin, *Zh. Neorg. Khim.*, 25, (1980), 1624.
- [51] A. K. Molodkin, A. M. Karagodina, S. B. Nechitaïlov, A. G. Dudarieva, A. G. Krochina, *Zh. Neorg. Khim.*, 31, (1986), 789.
- [52] J. Rejek, L. Rycerz, E. Ingier-Stocka, M. Gaune-Escard: Thermodynamic and Transport Properties of the $PrBr_3$ -KBr Binary System, *J. Chem. Eng. Data* (2010), 1871
- [53] Leszek Rycerz, Ewa Ingier-Stocka, Madjid Berkani, Marcelle Gaune-Escard : Thermodynamic and transport properties of the $PrBr_3$ -RbBr binary system, *J. Alloys Comp.*, 501 (2010) 269
- [54] M. Gaune-Escard, L. Rycerz, E. Ingier-Stocka, S. Gadzuric: Phase diagram topology of lanthanide(III)-alkali metal halide systems : an ionic potential approach, *J. Nuclear Mat.* (submitted).

- [55] G. Meyer, N. Gerlitzki, S. Hammerich: Phase diagram topology of lanthanide(III)-alkali metal halide systems : an ionic potential approach *J. Alloys Compd.*, 380 (2004) 71–78.
- [56] Y. Sun and Zh. Qiao, Rare Metals, A Chinese Journal of Science, Technology & Applications in Field of Rare Metals, 21 (2002) 1.
- [57] S. Gadzuric, E. Ingier-Stocka, L. Rycerz, M. Gaune-Escard: Phase Diagram and Electrical Conductivity of EuBr_2 — LiBr Binary System., *J. Alloys Compd.*, 397 (2005) 63-67.
- [58] E. Ingier-Stocka, S. Gadzuric, L. Rycerz, M. Golonka-Cieslak, M. Gaune-Escard: Phase diagram and electrical conductivity of the EuBr_2 – NaBr binary system, *J. Nucl. Materials* 344 (2005) 120-123.
- [59] L. Rycerz, E. Ingier-Stocka, M. Cieslak-Golonka, A. Wojciechowska, S. Gadzuric, M. Gaune-Escard: Physicochemical properties of the EuBr_2 – KBr binary system, *J. Alloys Compd.*, 450 (2008) 157–161.
- [60] A. G. Sharpe, *Inorganic Chemistry*, Longman, New York, 1986.
- [61] I. N. Belyaev and A. K. Doroshenko, in: *The Physicochemical Analysis of Salt Systems*, Izd. Rostovsk Gos. Univ., Rostov (1962), 12.
- [62] M. V. Tokarev, Nauchn. Zap. Voroshilovgradsk. Ped. Inst., 6 (1956) 3.
- [63] L. Rycerz, M. Cieslak-Golonka, E. Ingier-Stocka, M. Gaune-Escard: Phase diagram and electrical conductivity of TbBr_3 - NaBr binary system, *J. Therm. Anal. Cal.*, 72 (2003a) 231-239.
- [64] F. Da Silva, L. Rycerz, M. Gaune-Escard: Thermodynamic Properties of EuCl_2 and the NaCl - EuCl_2 System, *Z Naturforsch* 56 A., (2001) 647-652.
- [65] F. Da Silva, L. Rycerz, and M. Gaune-Escard: Calorimetric Investigation of MCl - EuCl_2 Melts ($\text{M} = \text{Na}, \text{K}, \text{Rb}$), *Z Naturforsch* 56 A., (2001) 653-657.
- [66] A. G. Bergman, T.D. Zimina, Zh. Neorg. Khim., 10 (1965) 2326.
- [67] H. Fink, H. J. Seifert, Z. Anorg. Allg. Chem., 466 (1980) 87.
- [68] G. A. Bukhalova, A. M. Burlakov, Z. Neorg. Khim., 11 (1966) 1755.
- [69] A. G. Bergman, T. D. Zimina, Zh. Neorg. Khim., 10 (1965) 2326.
- [70] K. H. Mahendran, K. Sujatha, R. Sridharan, T. Gnanasekaran: Studies on the phase diagram of LiBr – SrBr_2 system, *J. Alloys Compd.*, 358 (2003) 42–47.
- [71] S. Gadzuric, E. Ingier-Stocka, L. Rycerz and M. Gaune-Escard: Phase diagram and electrical conductivity of EuBr_2 – LiBr binary system, *J. Alloys Compd.*, 397, 19 (2005) 63-67.
- [72] L. Rycerz, E. Ingier-Stocka, M. Cieslak-Golonka, A. Wojciechowska, S. Gadzuric, M. Gaune-Escard: Physicochemical properties of the EuBr_2 – KBr binary system, *J. Alloys Compd.*, 450, 1-2 (2008) 157-161.
- [73] E. A. Shurginov in: *Proceedings of IX Scientific Conference of Aspirants, Exact and Natural Science Series*, Izd. Rostovsk. Gos. Univ., (1969), 37.
- [74] S. Gadzuric, *Experimental study of thermodynamic, transport and structural properties of lanthanide bromide systems. Properties prediction by data mining statistical techniques*, PhD Thesis, Université de Provence Aix-Marseille 1, France, 2006.
- [75] R. Riccardi, C. Sinistri, V. Campari and A. Magistris, Z. Naturforsch., 25a (1970) 781.
- [76] M. Gaune-Escard, L. Rycerz (unpublished).
- [77] S. H. Wang, Z.J. Tang, S.B. Jiang, H.Z. Yang, J. Chinese Rare Earths (in Chinese), 2(1), (1984) 25.
- [78] S. H. Wang, and M. Zhao, J. Chinese Rare Earths (in Chinese), 127, (1987) 219.
- [79] W. Urland, G. Meyer, Z. Anorg. Allg. Chem., 461 (1980) 347.
- [80] G. Schilling, C. Kunert, Th. Schleid, G. Meyer, Z. Anorg. Allg. Chem., 618 (1992) 7.
- [81] G. Schilling, G. Meyer, Z. Anorg. Allg. Chem., 622 (1996) 759.78.
- [82] X. D. Wang, S.H. Wang, Chem J Chinese U (in Chinese), 2(2), (1991) 239.

- [83] L. T. Wang, S. B. Jiang, S. H. Wang, Chem J Chinese U (in Chinese), 14(9), (1993) 1263
- [84] G. Miller, M. Smith, M. Wang, S. H. Wang, The synthesis and crystal structure of Rb_4TmI_6 : Lattice energy calculations on networks of condensed cubes, *J. Alloys Compd.*, 265 (1998) 140-145.
- [85] M. T. Wang, S. H. Wang, J. Solid State Chem., 128 (1997) 66.
- [86] L. Chen, M.T. Wang, S. H. Wang, Synthesis and structure of new iodides Cs_4EuI_6 and Rb_4EuI_6 *J. Alloys Compd.*, 256 (1997) 112-114
- [87] Z. J. Tang, H.Z. Yang, S.H. Wang, J. Chinese Rare Earths (in Chinese), 4(1), (1986) 71.
- [88] Marcelle Gaune-Escard, Leszek Rycerz, Slobodan Gadzuric, Weiping Gong, M. F. Butman, Sergey A Kuznetsov, Lanthanide-based halide systems: a fascinating route from multitechnique data acquisition to data prediction, *Proc. MOLTEN 2009 Santiago Chile* (2009), 1411-1424